

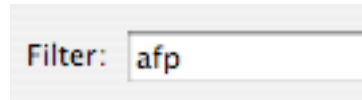
FireFox Directions:

On Apple computers, in order to enable FireFox to respond correctly when going to our “Faculty Servers Web page”, users need to complete the following steps one time on their home computer (we are doing this on all school computers for you):

1. Type about:config in the address bar of Firefox, then hit return.



2. Type afp in the Filter:

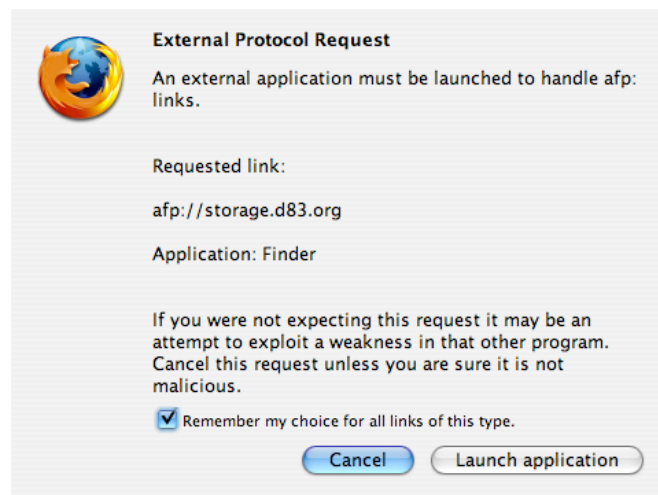


3. The highlighted line “network.protocol-handler.external.afp” will be plain (not bold) and the Value will be false. Double-click the line to make it true. (If its already true, don’t do anything.)

| Preference Name | Status | Type | Value |
|---------------------------------------|---------|---------|-------|
| network.protocol-handler.external.afp | default | boolean | false |

| Preference Name | Status | Type | Value |
|--|-----------------|----------------|-------------|
| network.protocol-handler.external.afp | user set | boolean | true |

The first time you follow an afp:// link (one to our servers), you will get this warning message:



Be sure to check the box to “Remember my choice” and then click Launch application. You will now be able to access any Web address that begins with “afp://” including our servers using Firefox.